

iNspect

1. IPD iNspect
- 2.
- 3.
- 4.
- 5.
- 6.

1 IPD iNspect

12V

11

12

- 1 \VAGenieSetup\VAGenieSetup iNspect Genie
- 2 \Sentinel\Setup Dongle
- 3 \iNspect\Setup iNspect
- 4 \IPP52RT\setup inspect
- 5 \Utilities\IPDVER

1

IP 192.168.18.117 255.255.0.0

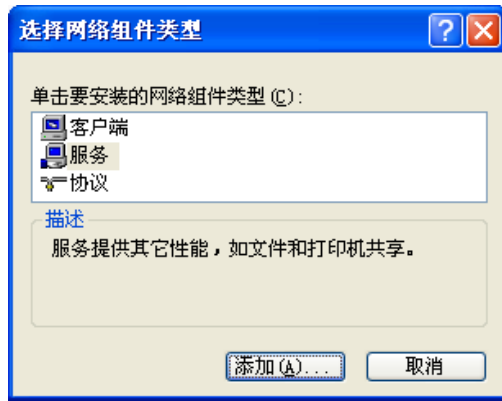
2

Genie CD Software Genie Framework

Genie_1.70.00.0256 Release

Manufacturer	Model	Serial number	MAC address	Status	Camera IP	NIC IP	Filter driver	MaxPktSize	Firm ver	User name	ABI
DALSA	Genie M1024	S1008673	00:01:00:11:7A:5D	GVSP unavailable	172.16.239.2	172.16.239.1	Disable	0	62735	S1008673	0001

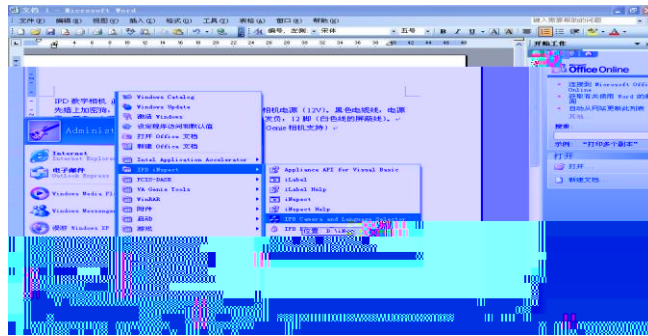
Status GVSP unavailable Filter driver Disable



Manufacturer	Model	Serial number	MAC address	Status	Camera IP	NIC IP	Filter driver	MaxPktSize	Firm ver	User name	ABI
DALSA	Genie M1024	S1008673	00:01:0D:11:7A:5D	Available	172.16.239.2	172.16.239.1	Enable	0	62735	S1008673	0001

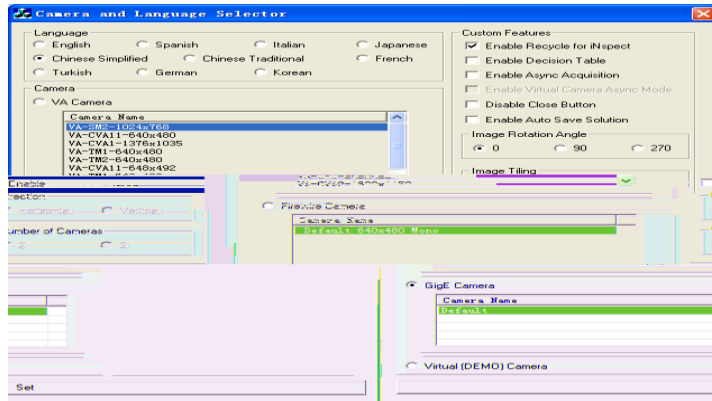
2

inspect



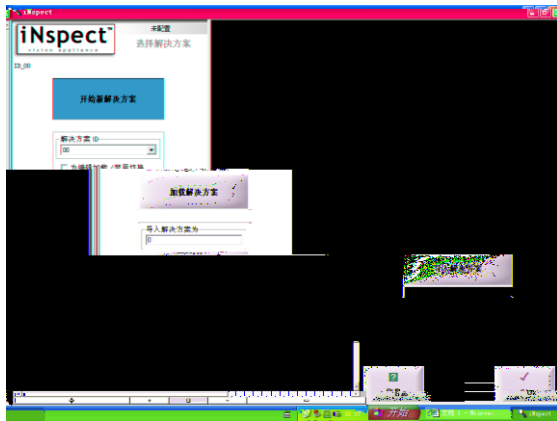
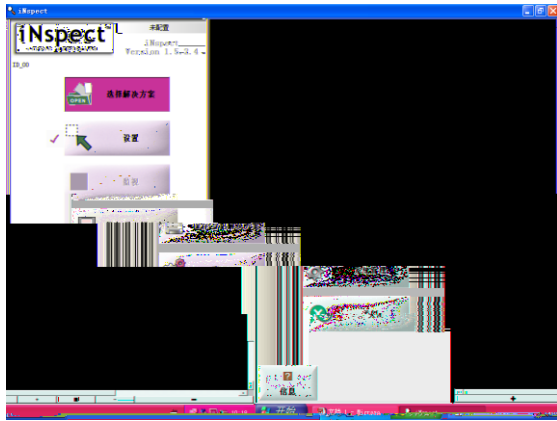
Set

iInspect

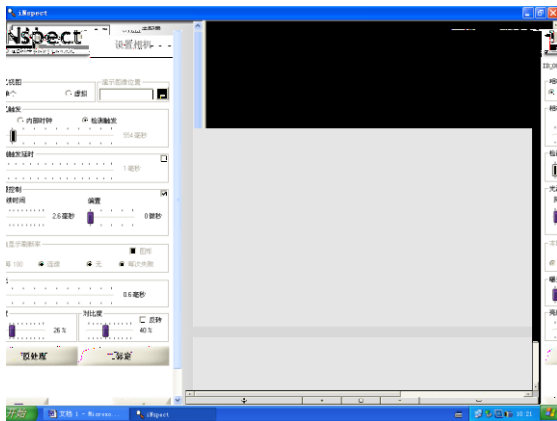


3

inspect



:



600ms

0.6ms

OK

4

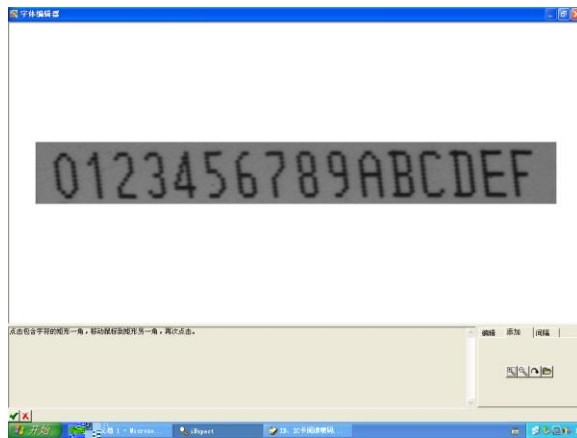
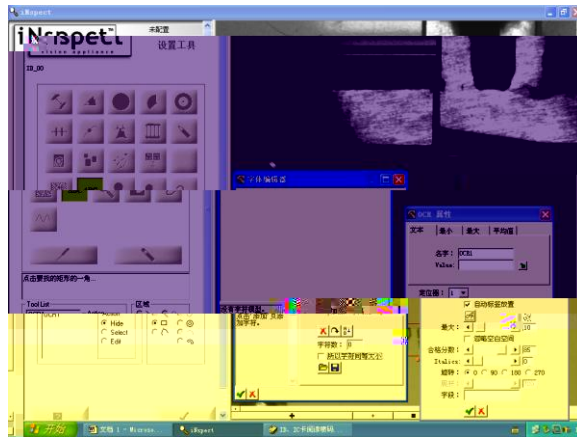
iNspect

Snap Triggered

Print IC

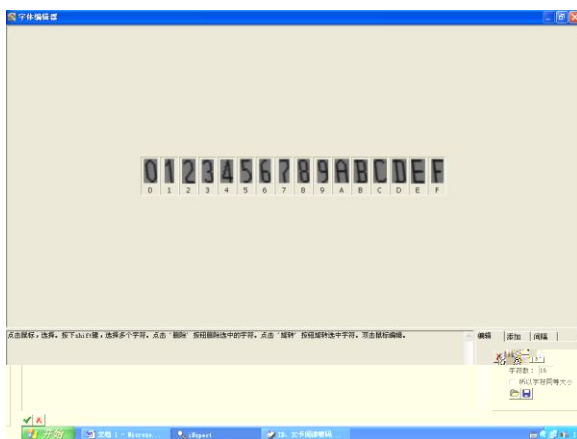
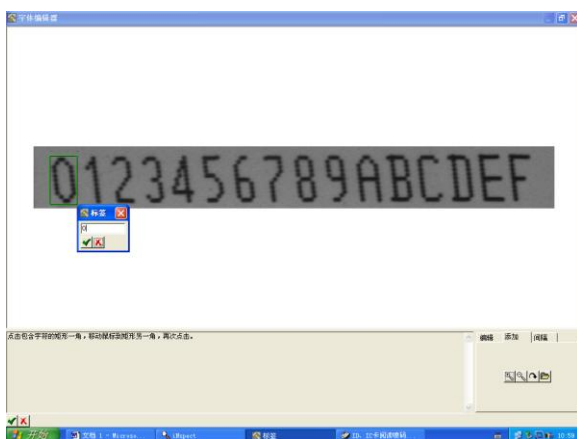
ABC

OCR



0

0

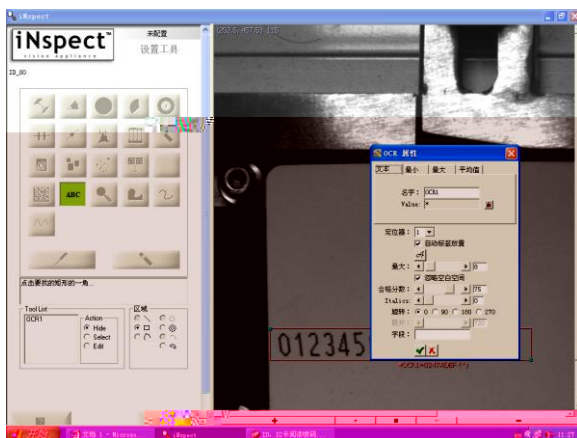


OCR Value *

75 85

OCR

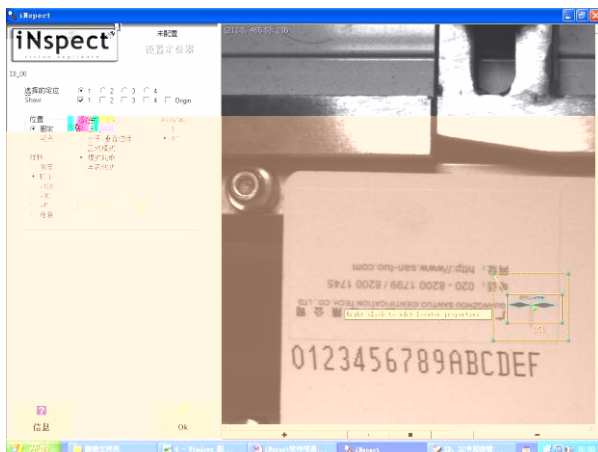
OK



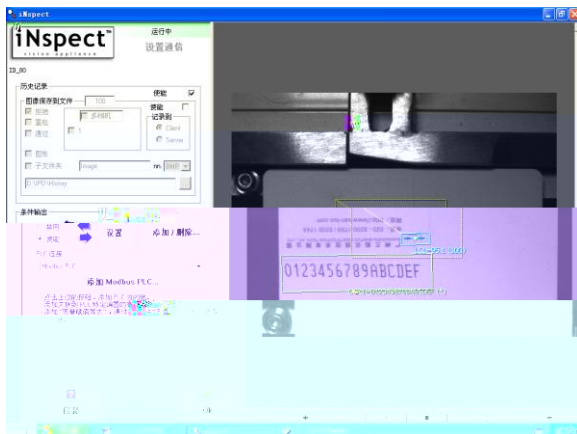
Show 1

Accuracy 0.1

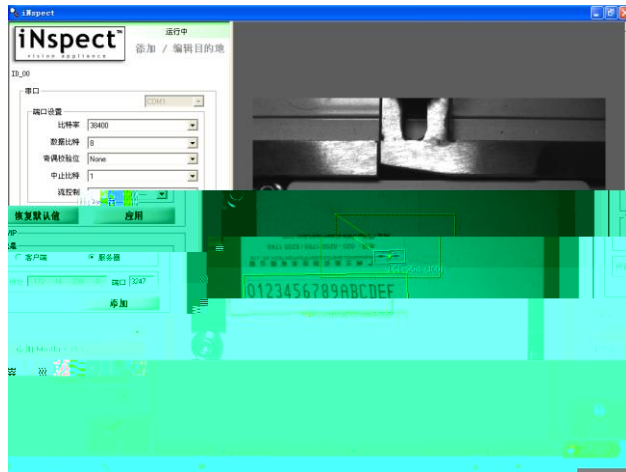
OK



6

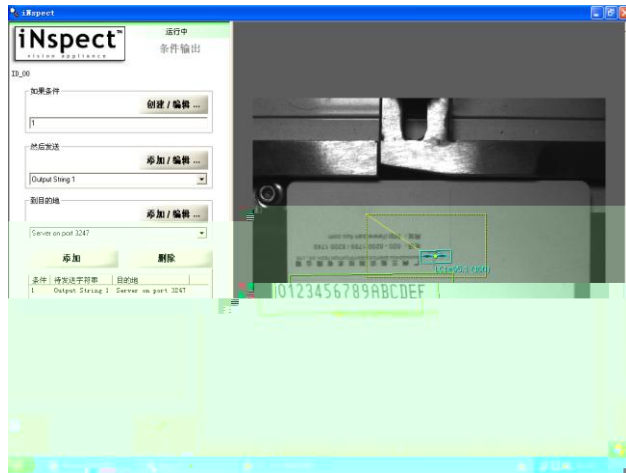


1



Server on port 3247

OK



PLC

Modbus PLC

OK

